

- |   |  |    |   |    |   |
|---|--|----|---|----|---|
| 2 | Principal's Welcome  | 7  | Information and<br>Communication Technologies<br>Bi-lingual Education<br>International Students | 11 | Reporting to Parents<br>Homework<br>Home-School<br>Communications               |
| 3 | Board of Trustees<br>Kowhai Guiding Principles<br>New Zealand's First<br>Intermediate School | 8  | Extension Opportunities<br>Learning Support<br>Health Promoting School<br>Sports                | 12 | School Fees and<br>Donations<br>School Hours<br>and Attendance                  |
| 4 | Learning to Learn<br>Quality Teachers  | 9  | Education Outside<br>the Classroom<br>Co-curricular Opportunities<br>Performance                | 13 | Uniform<br>Girls<br>Boys<br>Hair<br>Jewellery                                   |
| 5 | Attention to Literacies<br>Fun and Challenge<br>Personalised Learning                        | 10 | Student Behaviour<br>Houses<br>School Council   | 14 | Stationery<br>Canteen<br>Dental Clinic<br>Health Nurse<br>Sick Bay<br>Transport |
| 6 | Diversity and Harmony<br>School Organisation<br>Facilities<br>Curriculum                     |    |   |    |   |



## Principal's Welcome

*My warm greetings to children, parents and caregivers; especially to those considering enrolment at Kowhai Intermediate School.*

*This prospectus is designed to introduce our school and how it meets the needs of young adolescents learning and growing through the exciting middle years.*

*The Kowhai vision is: We Learn. No Exceptions.*

*Our expectation is that everyone in our school – students, staff and families – are committed to learning all the time and from each other. At Kowhai, we want to break through any limitations that may hinder our students from excelling in their learning and developing as persons. We promote a problem-solving culture in our school that works against helplessness and promotes a 'can-do' attitude. We tell our students that high expectations means being certain that all of us can learn and improve - no exceptions!*

*Of course, a booklet like this can only give a taste of our school, so I invite you to come and visit Kowhai at a time that suits you. I would be happy to show you around the school so that you can see it in action and feel the pulse of a school with a strong sense of its purpose: to have young people learning.*

*Welcome to Kowhai Intermediate School, New Zealand's first intermediate school.*

**Paul Douglas**  
Principal

## Kowhai Vision We learn. No Exceptions

House shields



## Kowhai Guiding Principles

- Treating others with kindness, fairness and consistency
- Showing acceptance and understanding of individual differences
- Commitment to the highest quality of teaching and learning
- Promoting our Treaty of Waitangi responsibilities
- Taking pride in and responsibility for our environment

## Board of Trustees

**Blair Cooper** (Parent Representative)  
**Lisa Darragh** (Staff Representative)  
**Paul Douglas** (Principal)  
**Nerina Howe** (Parent Representative)  
**Helen Ngatai** (Parent Representative)  
**Eldon Roberts** (Chair)  
**Grant Lester** (Parent Representative)  
**David Parry** (Parent Representative)

## New Zealand's First Intermediate School

Kowhai Intermediate School was established in October 1922, the first intermediate school in the country. Originally called Kowhai Junior High School, it catered for Forms 1 to 4 and was based on an American model. In the 1920s primary schooling was the end point for many children so the Junior High School was designed to help students explore their 'aptitudes, abilities and interests' with a view to continuing in secondary schooling or taking up a 'suitable career'. By the 1950s, New Zealand had defined its own approach to middle schooling and Kowhai was designated an 'Intermediate School', catering for

### *Ko taku toa he toa takitini*

(My strength comes from whanau and those who came before me)



Principal Paul Douglas

# “Five things I want you to know about the essence of Kowhai”

## 1. LEARNING TO LEARN

Kowhai is committed to teaching children how to learn. We don't see children as empty buckets to be filled up with information. We believe children need to learn how to build up their own understandings. Our teachers are not transmitters of information, they are co-constructors – like scaffolders who have to keep one step ahead of the builders as they add the next storey to their understanding. Our strong Inquiry Learning Model reflects this. It is about making sense of facts, not just collecting them. Learning to learn is about being equipped to face the future and shape it. Kowhai students are learning to learn.

## 2. QUALITY TEACHERS

The research is conclusive: Large scale surveys of studies into what makes kids learn best, show that the teacher has the biggest impact. The Kowhai team possess academic rigor and are highly trained in current best teaching practices. They understand young adolescents and love working with this age group. Their passion for middle years schooling inspires and challenges our students. They know how to identify and solve obstacles to children's learning and how to capitalise on children's strengths and interests to urge them towards excellence. They create

caring and inclusive classes where students learn safely and happily. They know how to plan real life learning experiences that match the concepts being learned. They are skilled at providing the feedback and questioning that will lift students up to their next level of achievement. Quality teachers are not just good at their subjects, they are strong role models, too – they are quality people.

## 3. ATTENTION TO LITERACIES

Literacy is the ability to speak, read and write effectively so you can make progress in life and interact successfully with the world. There are other literacies that 21st century citizens need, as well. Reading, writing and speaking are certainly at the top of the literacy list and we have proven and consistent literacy programmes in every class across the entire school. Children arrive at Kowhai with varying abilities in reading and writing and we expect to move all of them to higher levels. The second key literacy is numeracy - understanding and communicating in the language of number. Our staff have just completed three years of intensive mathematics professional development and are well-equipped to seamlessly move students on towards high school. Digital literacy – information and communication skills/tools are a new 'world' of skills and possibilities that our children must master so they can connect with and navigate the ocean of ideas available via the internet. Second language literacy – learning others' languages allows our children to understand other cultures more fully and to move between them confidently. We have strong professional leaders in each literacy. We pay careful attention to literacies because we aim to produce richly articulate young people.

## 4. FUN AND CHALLENGE

These adolescent years are high energy! Our children are getting used to being more independent and are keen to try out new things. Kowhai deliberately caters for this liveliness and inquisitiveness. Each year there is a rich variety of co-curricular activities available. Camps are an excellent setting for children to safely explore life outside the nest. There is a bi-annual class camp and specialist camps such as sports camp and snow camp. On Adventure Days, students try out new challenges such as mountain-biking and golf. This is the age for attempting new sports and proving yourself in the ones at which you already excel! Children can learn a musical instrument, form a band or participate in other cultural and performance groups. Fun and challenge are vital ingredients to the middle school years at Kowhai.

## 5. PERSONALISED LEARNING

Our school is set up to identify and meet the needs of individual learners; to personalize their education. At Kowhai, your child will have his/her own teacher who gets to know him/her really well. We believe that at this age children still need a good deal of nurturing and understanding to get the best from their schooling. A classroom teacher (rather than a subject-specialised teacher) is able to help students to work through dilemmas, solve problems and meet challenges by bringing together learning from a range of disciplines. This is consistent with the intent of the new NZ Curriculum. We get involved with parents at the very start of the school year to learn from you about your child and set some significant learning goals for each year. Streaming occurs within the classroom to ensure that every student is working at the appropriate level. Students with special strengths or needs have supplementary programmes to ensure that their learning is truly personalised and not merely a generic 'course'.



## Diversity and Harmony

Kowhai attracts families from a broad cross-section of New Zealand society. We celebrate the diversity of cultural, social and economic background of Kowhai students, aiming to show the way towards New Zealand's multicultural future. The school community's socio-economic status is decile 6 - middle New Zealand. The school enjoys and promotes an harmonious school climate. ERO (2005) stated: "Children throughout the school are fully engaged in learning and can remain on task for significant lengths of time. They are able to work independently and to take responsibility for their own learning. They enjoy warm, affirming relationships".

## School Organisation

The school is organised into teams of Year 7 and Year 8 classes. These are named, Whanau Takahe, Whanau Whero, Whanau Kotuku and Whanau Pounamu. Each whanau is led by an experienced senior teacher supported by a balance of teacher strengths that will ensure students get effective teaching. This arrangement provides healthy interaction between Year 7 and 8 students and supports the pastoral care of students. The safety and well-being of our students is a top priority for us.

## Facilities

Kowhai has spacious and attractive grounds and the Board is committed to retaining these wide open spaces. A new administration and library block was opened in 2004 and eight classrooms were enlarged to provide more flexible spaces. There are 18 classrooms, a music room, Pasifika room, four technology rooms, a computer suite, canteen, dental clinic and large school hall. A new adventure playground has been installed.

## Curriculum

The curriculum includes:

- English (oral, reading, writing, visual language)
- Mathematics and statistics
- Science
- Social Studies
- Health and Physical Education
- Technology
- Arts
- Second Language learning (Maori, French, Chinese)

The school is equipped with specialist teachers and facilities in music, visual arts, foods, soft materials, hard materials, electronics and structures technologies.

## Information and Communication Technologies

Kowhai keeps pace with the ever-expanding opportunities provided by ICT tools and software. Students engage in interactive learning, research, data manipulation, graphic design, communication and multimedia presentations. In 2007 the school redeveloped its computer centre. There are two large fully-equipped ICT rooms. An ICT teacher supports students learning in current topics. Each Whanau has computers in its classrooms, plus digital whiteboard and data projector. Our library is set up with an information-technology area for independent student research. All students and parents sign an internet use safety agreement and students are taught about appropriate use of the internet.

## Bi-lingual Education

*Ko te putake o nga tikanga Maori, ko te reo. The very essence of Maoridom is the language.*  
An outstanding feature of this school is Whanau Pounamu. This unique and highly successful approach to Maori education attracts applicants from right across Auckland. The school offers proven quality Maori education embedded within a state school. Kowhai's reputation has been enhanced by the New Zealand-wide successes of the Pounamu cultural performances and their outstanding results in national examinations. Whanau Pounamu comprises three Maori language classes (full immersion or bilingual).

These classes provide a holistic approach to learning that is integral to Te Ao Maori. Te Reo Maori and Tikanga Maori are integrated into all Pounamu's subject areas. Students have the opportunity to understand and acknowledge Tikanga Maori; to grow in their ability to understand and speak Maori; and to read and write in Maori, applying Te Reo in their everyday environment. The number of students is limited to 20 per class, which enables the nurture of aroha, manaakitanga and tautoko. Enrolment in these classes is by interview.

## International Students

Kowhai welcomes international students. We place international students in mainstream classes with Kiwi students, as well as providing withdrawal classes to teach oral and written English. Students have a designated person to see to their pastoral care in school and to ensure that their accommodation arrangements are safe and happy. Enrolment as an international student is made through the Principal. (An international student enrolment pack can be requested from our school office.)

## Extension Opportunities

Early in the school year, students who may benefit from our Gifted and Talented programmes are identified. We take a broad and inclusive approach to identifying such students. Information about students' special abilities is assembled from their contributing schools, parents, teacher observation and term one achievement data. Gifted students are clustered in mainstream classes. There is academic streaming with the classroom. The open-ended nature of the Inquiry Learning model provides additional enrichment and extension for gifted students. The Open Minds programme operates on Fridays for students identified with superior academic levels and motivation. Talent Development modules offer a variety of enrichment opportunities. We also participate in an annual inter-school sports camp especially for

levels of achievement. Kowhai is an inclusive school where students with special needs are integrated into the school with support. There are two Resource Teachers: learning and behaviour (RTLB) based at the school and we have excellent contacts with agencies outside the school to support students with learning and/or behaviour needs.

## Health Promoting School

This is a Health Promoting School. A representative committee including students, the public health nurse, visiting experts and the health teacher, meet to plan projects that will positively affect the health of our students (e.g. cycling safety, canteen food, sun-safe issues). Our

practise after school with supervision. The school has two large fields for soccer, rugby, cricket, softball, athletics and other field sports. There are full size netball and basketball courts and many other hard court and grassed areas for informal games and sports. Our large hall is used in winter for gymnastics, badminton and other indoor sports. We have teachers with specialist knowledge of coaching various codes and from time to time we bring in coaches to train students in various sports.

The school has an agreement with a swimming school for the complete redevelopment of our existing pool site into a heated indoor complex.

## Pool

A 25 metre competition swimming pool has been built at Kowhai. This indoor heated complex is a joint venture with Trent Bray Swim School. Kowhai students have year-round access to the pool, supported by top quality aquatics instruction.

## Co-curricular Opportunities

Co-Curricular arts and performance programmes are available for a modest cost (in such things as



students with special ability in sports. Students are encouraged to take part in the University of New South Wales Australasian Schools Competitions. Our Associate Principal oversees the Gifted and Talented programmes and she is available for interviews with parents who feel that their child may need special programmes to meet his/her particular abilities.

## Learning Support

We have success in moving students with learning needs on to independence and to a level suited to high school learning. Our Associate Principal has a strong background in special education and oversees remedial and support programmes as well as programmes for new speakers of English. Kowhai has a learning support centre (the Totara Room) where our learning support teacher provides targeted instruction for students who need a boost to bring them up towards expected

health curriculum covers such topics as: building self-confidence through better communication; learning about emotions; developing good relationships with peers; strengthening family relationships; pubertal change; decision making; knowing the dangers about drugs; setting goals. Three days a week, students participate in regular fitness programmes at the start of the school day. Activities include aerobics, running/power walking, skipping and court games.

## Sports

Kowhai has a strong and successful sporting tradition and students are offered the chance to trial for at least fifteen different sports each year. Sport is played at two different levels: inter house sport emphasises supporting each other and getting involved; interschool sport emphasises competitiveness and refining skills (fair play is expected at all levels). Some interschool teams

## Education Outside the Classroom

There are many opportunities for students to engage with the 'real world'. Their studies often involve field trips. Each whānau plans a camp bi-annually and we value parental involvement. Adventure Days are an opportunity for students to try new challenges (eg; Mountain-biking; golf; ropes course). Students engage in fund raising to help with the cost of camps. Kowhai takes part in an annual inter-school Sports Camp and there is a bi-annual Ski Camp.

flute, brass, guitar, keyboard, drums, dance, etc. chess etc.) Students can learn an instrument or develop an interest by opting into these classes, most of which are held at lunchtimes or out of school hours.

## Performance

A variety of performance opportunities occur each year. Biannually, a school production allows student to take part as actors, dancers, singers, musicians, set designers, make-up artists and stage crew. Talent quests, performing arts evenings and school assemblies provide further opportunities for students to shine.

## Student Behaviour

Students are expected to take responsibility for their behaviour and we expect to support them with encouragement, advice and discipline. Our prime focus is affirming and encouraging excellent behaviour, while maintaining fair consequences for inappropriate behaviour. The Principal and Associates consider time well spent in understanding the reasons for inappropriate behaviour and putting programmes in place that will help students to make positive changes. The school carries out regular safety audits to ensure that bullying is reported and dealt with. Our school discipline plan is based on the Kowhai Guiding Principles and the following School Rules:

1. Respect others and yourself.
2. Always do your best and allow others to do their best.
3. Be in the right place at the right time.
4. Look after the school and all property.
5. Be responsible for your own things, including correct uniform.

The Health programme provides a context for positive behaviour to be discussed and practised. A weekly Whiz Kids prize draw is held at our school assembly. Students receive Whiz Kids cards to acknowledge their excellent behaviour during the week and the two cards are drawn for music voucher prizes. The school aims to accentuate positive behaviour wherever possible. At our annual prize giving ceremony, student success in academia, service, sport, arts and technology, is acknowledged.

## Houses

Kowhai has a strong tradition that is reflected in the school houses (Burns, Parr, Garrard and Rudman). Each teacher and student is a member of one of the school houses. These provide a chance for students from right across the school to mix together for events and competitions. The house points competition is used as a motivation to become fully and positively involved in school life. Houses provide another opportunity for students to practise leadership.

## School Council

Each class elects a school councillor through whom their concerns and recommendations come to the school management or Board of Trustees. School councillors also organise charity events for good causes outside the school and fundraisers, such as social events, for the benefit of their peers.

## Reporting to Parents

### Term 1

Week 1: Parents receive a profile sheet to fill out their child.

Week 2&3: 3 Way Consultation Interviews. Parents, child and teacher meet to set learning goals for the year.

Week 10: Key Competencies progress report goes home to parents.

### Term 2

Week 3: 3 Way Interviews. Parents, child and teacher meet to discuss formal testing results and check progress against the goals set early in the year.

Week 10: Mid-year Achievement Summary Report goes home (summarises progress as measured against the NZ Curriculum levels). Portfolio goes home with work samples of the first half year showing the levels on each item.

### Term 3

Week 10: Portfolio goes home with further assessed work samples.

### Term 4

Week 10: Final Achievement Summary Report goes home (summarising progress against the NZ Curriculum levels). Portfolio goes home with final assessed samples of the year's work.

Parents are encouraged to contact their child's teacher at any time during the year by phone or email, or set up meetings as needed.

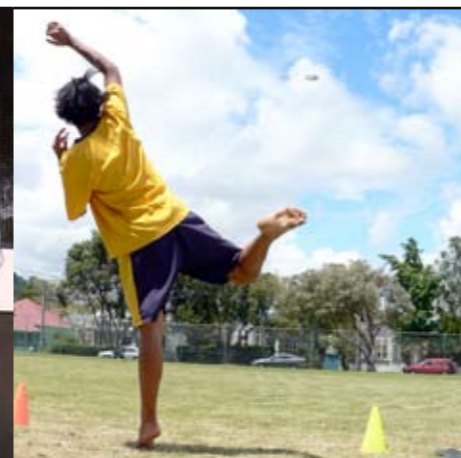
## Homework

Homework is set by each Whanau and is aimed at encouraging sound work habits and practising concepts already taught in class. Homework supports the current teaching programme in the class and is usually set for Monday to Thursday and should involve at least 30 minutes work each evening, plus some recreational reading. Most students will still require some parental encouragement to manage homework time, but it is intended that students can complete the work independently.

## Home-School Communications

School newsletters are sent home with students four times per term. Whanau letters will come home advising of class and whanau events as they occur. Homework books are a great way to send messages back to your child's teacher. You may also email the teacher or phone and leave a message for him or her to call you.

The school website is [www.kowhai.school.nz](http://www.kowhai.school.nz) and this is regularly updated with events, reports, homework support and general school information.





## School Fees and Donations

Curriculum Donation (one child): Contribution to school funds helps to provide extra curriculum resources that are not funded by the Government.	<b>\$140.00</b>
Compulsory Levy (one child): To cover incidental project materials, such as photocopying, paints and technology materials supplied by the school.	<b>\$40.00</b>
<b>TOTAL (one child):</b>	<b>\$180.00</b>

Please discuss a discounted rate with the school Executive Officer if you have more than one child enrolled at the school.  
Payment of fees and donations can be made termly. Eftpos and Visa/Mastercard available.

## School Hours and Attendance

Classrooms open at 8.30am  
Classes begin at 9am  
Interval 10.25 - 10.50am  
Lunch eating 12.05 - 12.20pm  
Afternoon break 1.30 - 2.00pm  
School finishes at 3pm

End of term school finishes at 3pm (2pm on the last day of the school year).

Students should be at school, no later than 8.30am, to allow themselves time to get ready for the start of lessons. Late students report to the school office to collect a late note. Lateness is monitored and followed up by an Associate Principal.

Students who are absent or late for any reason need to present a signed parental note to their teacher. Parents are urged to phone the school office if their child is going to be absent.

School sports practiced and music tuition usually occurs between 8am and 9am.

## Uniform

Students are required to wear our school uniform at all times during the school day and when travelling to and from school. The uniform gives students a sense of belonging and allows all of them to be equally well-dressed.

Uniforms Plus, 52 Carr Rd Mt Roskill (phone 625 5009) are the suppliers of our school uniform.

## Girls

Culottes (Kowhai maroon and navy check) or Shorts (plain navy)  
Kowhai Polo Shirt (navy)  
Kowhai Sweatshirt (maroon)  
Short Socks (plain white)  
School shoes (black leather lace-up)  
Roman Sandals (black or brown) - Terms 1 and 4 only  
School Hat/Cap (plain navy flexifit cap or bucket hat) - compulsory in Terms 1 and 4  
Kowhai PE T-Shirt  
Kowhai PE shorts

## Boys

Shorts (navy)  
Kowhai Polo Shirt (navy)  
Kowhai Sweatshirt (maroon)  
Long socks (plain black)  
School Shoes (black leather lace-up)  
Roman Sandals (black or brown) - Terms 1 and 4 only

School Hat/Cap (plan navy flexifit cap or bucket hat) - compulsory in Terms 1 and 4

Kowhai PE T-shirt

Kowhai PE shorts

Optional clothing:

Long Trousers (navy) - Terms 2 and 3 only

Long sleeved Skivvy (navy) - Terms 2 and 3 only

Girls Tights (plain black) - Terms 2 and 3 only

Students may wear their own rain jackets to and from school on wet days but we do not permit these to be worn in the classroom.

We encourage students to bring sports shoes to wear for fitness, phys ed and sport, however we insist that these are only worn with PE uniform and not as part of the school uniform.

## Hair

For health and safety reasons, students with long hair must tie it back with either a plain black or plain navy hair tie.

## Jewellery

Students with pierced ears are permitted to wear a single stud in each ear (no hoops or decorative earrings). Apart from a watch, no other visible jewellery is permitted (including pierced tongues).

## Stationery

A list of the stationery your child requires will be included with enrolment packs to enable you to purchase these requirements prior to school starting. The school does not sell stationery.

## Canteen

The school canteen is run by contractors who provide a menu consistent with our Health Promoting School status. Please encourage your child to purchase these healthy alternatives to snack foods from a corner store. It is beyond doubt that healthy eating equates with successful learning. Students pre-order their lunches each morning for delivery to their classroom at lunchtime.

## Dental Clinic

A dental therapist works at Kowhai at times throughout the year. The clinic phone number is 846 5652. Alternatively, the Freemans Bay clinic number is 378 6742.

## Health Nurse

Auckland District Health provide a Public Health Nurse to visit our school to see children with health problems or to follow up any who fail hearing and vision tests. She arranges the immunisation of Year 7 students. Students can refer themselves to the Health Nurse who will keep parents advised and seek consent where necessary. The Health Nurse can be contacted on 357 2260 extension 867.

## Sick Bay

Our staff are not nurses, however our office staff have current first aid certificates. If a child is hurt or becomes ill, they will contact that child's parent, unless it is a minor matter. We do not hold students in the sick bay for long periods. In the event of a serious emergency, our staff will call an ambulance and advise you urgently. Please remember to update the school if you have a change of contact phone number. Always ensure that the school has an alternative contact in case you are unavailable.

## Transport

Train services run to and from the Kingsland station west through Mt Albert and east to Newmarket. A duty teacher supervises students after school in the environs of the station. However, parents should ensure that their child is fully aware of the safety considerations when travelling by train. Regular bus services are available along Dominion, Sandringham and New North Rds. Students are encouraged to cycle to school. They must wear a helmet and we urge parents to ensure that the child knows exactly what safe route to take to and from school. The school has a bike rack onto which students can lock their bikes. Students can walk safely to and from Kowhai and again we urge parents to show their child where and how to use the controlled crossings. We always encourage students to travel to and from school with others. If your child must come to school by car, please take care not to stop or park illegally.

*"it's cool that all the kids are so friendly"*

*"the work is challenging but fun"*



*"the best thing about Kowhai is the kind teachers"*

